



Serving professional woodwind players since 1994

Quodlibet[®] Support Devices

FHRED[®] and SAMI[™]

For - Clarinet, Bass Horn,
Oboe, Soprano Oboe, Oboe d'Amore,
English Horn, Bass Oboe
and Soprano Saxophone

SAX-ON[™]

For - Alto, Tenor, Baritone
and Bass Saxophone and Bass Clarinet

BHEN[™] and CASSI[™]

For - Bassoon

Member of NAMM

Quodlibet and FHRED are registered trademarks and SAMI and SAX-ON,
BHEN and CASSIE are trademarks of Quodlibet Inc.

Copyright Quodlibet Inc. 2003

P. O. Box 3780, Englewood, CO 80155-3780
Tel: 1-800-59-FHRED Outside U.S. 1-303-779-3083
fax: 1-303-779-4571
e-mail: fhred@quodlibet.com
Shop online at www.quodlibet.com

FHRED - Finger and Hand Retraining Ergonomic Device for players From Beginner to Professional for Oblo, Oboe d'Amore, English Horn, Bass Oboe, Clarinet and Soprano Sax



A FHRED instrument support is a telescoping peg with an attachment for the thumb rest of your instrument on one end and a rubber foot on the other. The telescoping sections of the FHRED allow easy adjustment, extending to the length needed for playing and collapsing to a minimum length for storage and transport. Because the FHRED attaches to thumb rest of your instrument and the base is placed on the seat of your chair or in a SAMI, nothing will interfere with the sound production of your instrument. When a FHRED is used for playing in a seated position, it transfers the stresses which cause physical problems to the chair seat not to some other part of your body. When a FHRED is used for playing standing, it transfers the stresses to a SAMI which attaches to a belt or sash around your waist so you never experience more force than the weight of your instrument. The FHRED instrument support comes in three models **Pro, Standard and Student**. Each model has several sizes to match your requirements.



"Some operas are very long and you hardly ever put the instrument down. I use a FHRED whenever my hand and arm get tired or sore. It is easy to keep in my case, quick to attach and the conductor can't even see it. I find it flexible and unobtrusive. It has been a tremendous help. I own three (FHREDS) because my students are always borrowing them".

Elaine Douvas
Principal oboe, Metropolitan Opera
Faculty, the Julliard School of Music

"Now I know what it feels like to play clarinet on the space shuttle and you don't even need a space suit."

"I don't have to remove the FHRED from my oboe when I put it down to play english horn.."

"The FHRED just hangs from the thumb rest and swivels back up into position when I pick up the oboe."

FHRED Pro Model for those who want the best



Pro and Standard FHRED models attach to the thumb rest to stay with your instrument ready to use even when the instrument is at rest or on a stand. Both use the same latching method.

Pro FHRED-1 extends from 7" to 10.5".

Pro FHRED-2 extends from 9" to 19".

ProFHRED XL extends from 12" to 22".

Pro models quickly telescope into place and lock with a spring latch. The top stage is an adjusting screw which retains your setting when the unit is collapsed for storage. To open, simply pull down on the base until the springs latch.

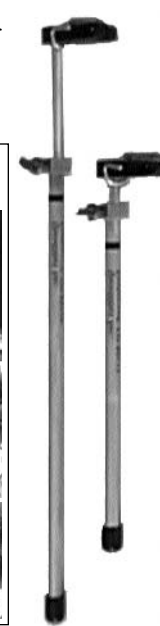
Standard Short extends from 6.5" - 12".

Standard Long extends from 10" to 17".

Standard XtraLong extends from 12" to 22"

Standard models quickly telescope to length and lock with a thumb screw.

FHRED Standard Model Suitable for most situations



"I will never play without a FHRED. I use every opportunity to tell people about it. It has saved my career."

Jennifer Paul
International Concert and Recording Artist,
Oboe d'Amore
President, Amoris International Ltd.

"Thank you for your career saving product, the FHRED!! I now have 23 students using FHRED. Last week one of my students went to a regional orchestra festival and met a very talented young lady who had wrist surgery due to problems associated with over use. This very talented oboist was able to continue playing because she now uses a FHRED!!! Sometimes I play for 8 hours or more. I would not take my oboe anywhere without my FHRED! I use it everyday in my teaching and performing. Thank you for making it available to us!"

Holly White
Freelance oboist, teacher and clinician
Pittsburgh, Pennsylvania

"Now I can practice till my chops give out."

"I can't believe I'm holding a clarinet and it feels this good!"

"The only bad thing about FHRED is that it's very comfortable and if you don't use it you feel the heaviness of the instrument."

"I was going to give up the clarinet and switch to french horn. FHRED saved my career."

FHRED Student Model

for beginning players and those who just need a little support



Student Short extends from 6.5" - 12".

Student Long extends from 10" to 17".

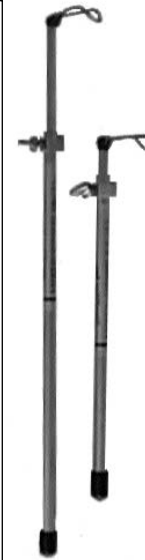
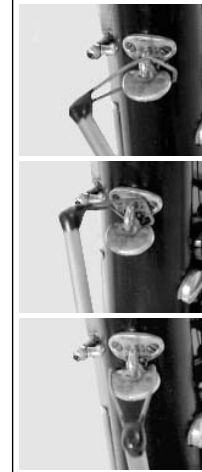
Student models quickly telescope to length and lock with a thumb screw.

Easily attaches to the thumb rest. No neckstrap ring required.

Specially designed to give beginners the right start. Helps develop good posture, hand position and technique. Makes teaching and learning more rewarding.

Teachers - Your students deserve the best. Ask about our special teacher discounts on Student models.

Attaching to the thumb rest



"I love my FHRED. It's awesome!"

"With FHRED I find total relief from the weight problems I had before."

"I bought one of these at the IDRS Convention. All of a sudden I can play EH for more than five minutes at a time without my right thumb smarting under the weight."

"It's a great gadget to save your right thumb."

"Years of experience has taught me to be cautious about something new, especially when it involves a child's learning experience, but this new version of the FHRED has proven itself to me in an unqualified manner."

Dr. Robert Fields
Freelance clarinetist, saxophonist and teacher
Marin County, California

"Every kid who picks up a clarinet should have one of these."

"This student would have quit without a FHRED."

SAMI the StandupAccessory for Musical Instruments



A SAMI can be used with any FHRED, attached to a belt or a neck strap to provide support and comfort never before possible.

A SAMI allows you to take complete control of your instrument when needed. Allows you to move from seated to standing without adjustment.

Why are a FHRED and SAMI better than a neck strap?

Normally use of a neck strap requires the player to push or pull on the instrument. This creates forces on the neck, hands and arms that are equal to several times the weight of the instrument.

The use of a FHRED and SAMI in combination with a neck strap limits the forces on the neck to the weight of the instrument and eliminates the forces on the hands and arms.

No neck strap ring on your thumb rest?

We offer thumb rests with rings which can be mounted on your instrument or we can supply a ring to be soldered onto your thumb rest.



Use an adjustable thumb rest?

We have ring adapters for **Lorée, Buffet, Leblanc, Bay, Howarth** and **Marigaux**.

Other makes available by special order.



For additional information visit our web site <http://www.quodlibet.com> or call 1-800-59-FHRED

SAX-ON Saxophone Assistant Xtraordinaire! for Alto, Tenor & Bari Sax and Bass Clarinet



The versatile play stand that gives new freedom to SAX players
from beginner to professional.

Even young players handle heavy baritone saxophones with complete confidence.

Professionals play long shows with less fatigue.

Designed at the request of a professional baritone sax player, the play stand is easy to use. Simply hang your instrument on the arm, tip it into position and play. Place your instrument in front of you or at your side; the weight is fully supported and the instrument is always ready to use. When you want to stand for a short solo, just slide your instrument off the arm and you're ready to play. When you need to stand for a long solo, your SAX-ON adjusts easily to hold your instrument at the proper height. Folds up for easy carrying and is constructed of quality materials to give you years of service. Do you double on sax and clarinet? Use a FHRED on your clarinet and a SAX-ON for your sax. Also works great on bass clarinet.

**Band Directors: let SAX-ON save you big money on instrument repair bills
resulting from damaged instruments!**



Thanks for sending the SAXON so quickly! I received it and tried it out with my bari sax - and it is awesome. Good timing too, as my rehearsals start up again next week. This device is so much better than any neck strap or harness. What a great invention!

Paula Czohara, The Villages, Florida

"I'm a woman freelance player and I do lots of long rehearsals and shows. My SAX-ON is great for those eight hour gigs. It's much more comfortable than a neck strap."

"Although I'm a professional player, I think the saxophone is a very awkward instrument to hold. A SAX-ON play/stand lets me play relaxed because I don't have to deal with the weight of the instrument hanging from a neck strap anymore."

"I got a SAX-ON to use with my bari. The other night I used it with my bass clarinet when I played 'Oliver'. It's terrific!"

"Either my little bari sax player is going to have to grow eight inches in two weeks or she's going to need a support. The SAX-ON is it."

BHEN Bassoon Holder ExtraordiNaire and CASSI Counterbalance And Support System for Instruments

BHEN the unique floor stand that supports your bassoon while you play, and holds it while you're not. Takes the weight of your bassoon off your body and puts it on the floor stand. Your bassoon rests in a natural position without the need for a seat strap, shoulder harness or neck strap. Allows you to move naturally with your instrument. Can also be used with a load balancer if desired.

BHEN is easy to use. Simply position the BHEN floor stand, attach the lanyard to the base of the bassoon, hook the bassoon neckstrap ring on the BHEN arm, tilt it over and play.

Need a support to take all the weight off your body? Add a CASSI the optional counterbalance that fits under the feet of your chair and allows you to position your instrument in the perfect playing position without holding it. Using BHEN with the counterbalance eliminates top-heavy bassoon problems.

Lets you play even while recovering from an injury. Great for beginners, allows longer practice sessions without neck, shoulder and arm fatigue.

To use BHEN with CASSI, attach the lanyard to the bassoon, connect the other end of the lanyard to the CASSI, slide the moveable adjustment into position and play. BHEN & CASSI require no modification to your instrument!



"Thanks to BHEN and CASSI I am back in the wind ensemble again."

Student injured in an auto accident with vertebrae injuries

"I have a tremor in my left hand which made it impossible for me to hold the bassoon. BHEN and CASSI have made it possible for me to continue playing this wonderful instrument. Thank you so much for this wonderful invention."

Amateur Bassoonist, Corunna, Michigan

New York repair technician and teacher "Love it! Love it! Love it!"

Air Force band player "That's just what we need."



For additional information visit our web site <http://www.quodlibet.com> or call 1-800-59-FHRED

BR-2003 021003

Quodlibet Order Form

All Concert and Studio FHREDS require a neck strap ring on the thumb rest.
(The ring should be of 14 gauge wire with an inside diameter of 0.19 inches.)

	Price	Quantity	Total
FHRED-1 Pro (7"-10.5") English Horn, Bass Oboe, Bassett Horn	\$87.99	_____	\$ _____
FHRED-2 Pro (9"-19") Oboe, Oboe d'Amore, Clarinet ___ Sop. Sax ___	\$124.99	_____	\$ _____
FHRED-XL Pro (12" to 22") Oboe, Oboe d'Amore, Clarinet ___ Sop. Sax ___	\$124.99	_____	\$ _____
FHRED Standard Model Short 6.5"-11" English Horn, Bass Oboe, Bassett Horn	\$49.99	_____	\$ _____
Long 10"-17" Oboe, Oboe d'Amore, Clarinet ___ Sop. Sax ___	\$49.99	_____	\$ _____
Extra Long 12" - 22" Oboe, Oboe d'Amore, Clarinet ___ Sop. Sax ___	\$49.99	_____	\$ _____
Additional Top for FHRED Pro & Standard Models Oboe, Oboe d'Amore, Bass Oboe, Clarinet ___ Sop. Sax ___	\$29.99	_____	\$ _____
FHRED Student Model Short 6.5"-11"	\$28.99	_____	\$ _____
Long 10"-17"	\$29.99	_____	\$ _____
SAMI (Stand up Accessory for Musical Instruments)	\$16.99	_____	\$ _____
Thumb rest with neck strap ring (Buffet/Leblanc)	\$16.99	_____	\$ _____
Ring adaptes for adjustable thumb rests Lorée ___ Buffet/Leblanc(round post) ___ Marigaux ___ Howarth ___ Bay ___ Buffet(4 position adjustment) _____	\$24.99	_____	\$ _____
SAX-ON ___ BHEN ___	\$69.99	_____	\$ _____
CASSI	\$30.00	_____	\$ _____
Shipping (U.S.) 1 FHRED \$5.00. 1 SAX-ON, BHEN/CASSI \$7.00 (call or e-mail for multiple quantities or shipments outside U.S.)			\$ _____
CO residents add 5.63% tax			\$ _____
TOTAL			\$ _____

CUSTOMER ORDERING INFORMATION	
Daytime phone number (____) - _____ - _____	Charge to my Visa ___ MasterCard ___ Discover ___
Card number _____ - _____ - _____ - _____	Exp. Date _____ - _____ Security code _____*
*3 or 4 digit black number on the back of your card	
Name on card (print) _____	
Signature _____	
Billing Address _____	
City _____	State _____ Postal Code _____ Country _____
Shipping Address (if different from above) _____	
City _____	State _____ Postal Code _____ Country _____
How did you hear about FHRED?	